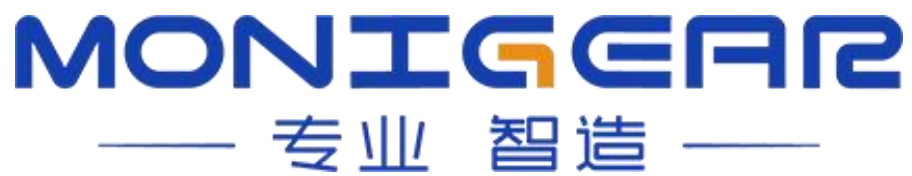


Monigear device

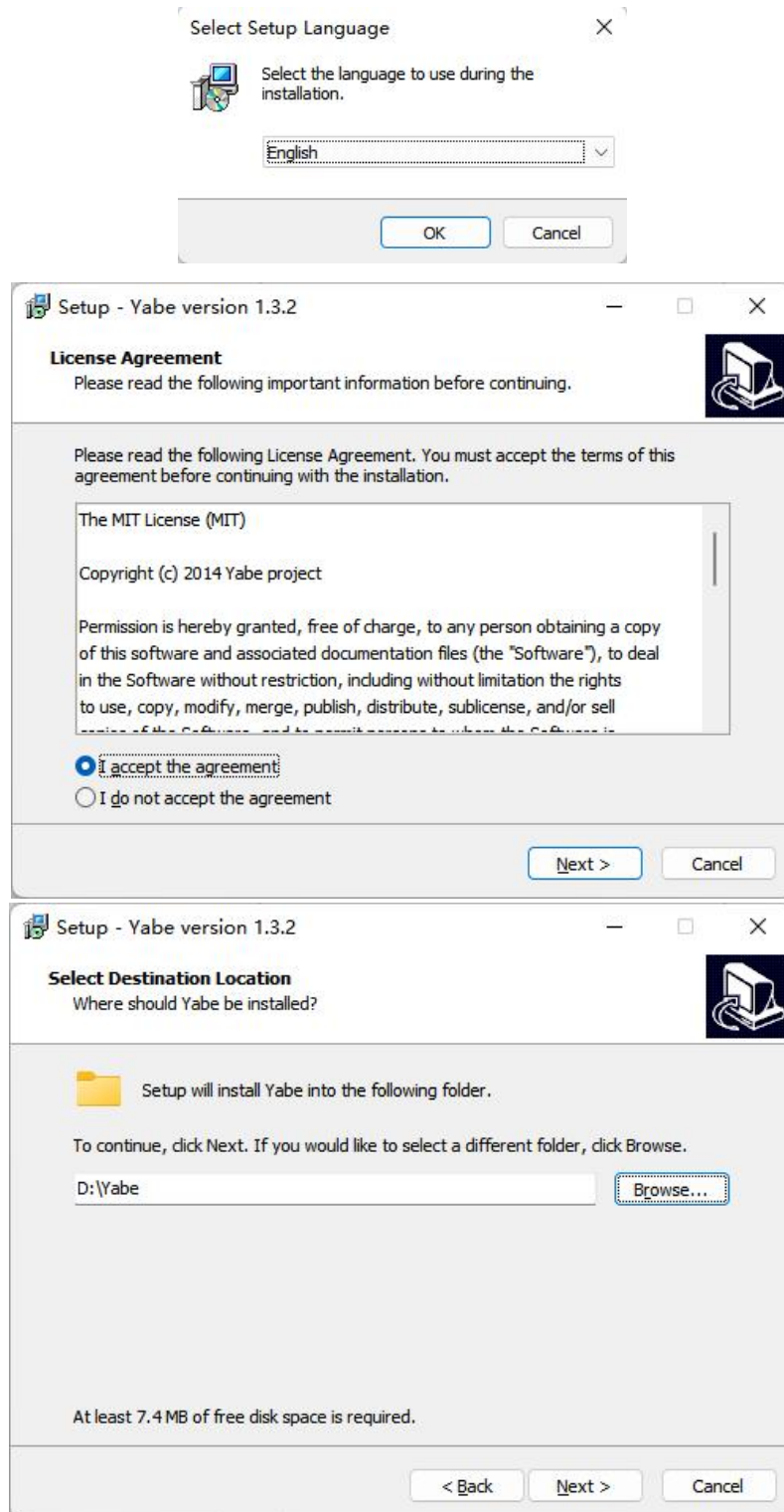
BACNET protocol test HOWTO

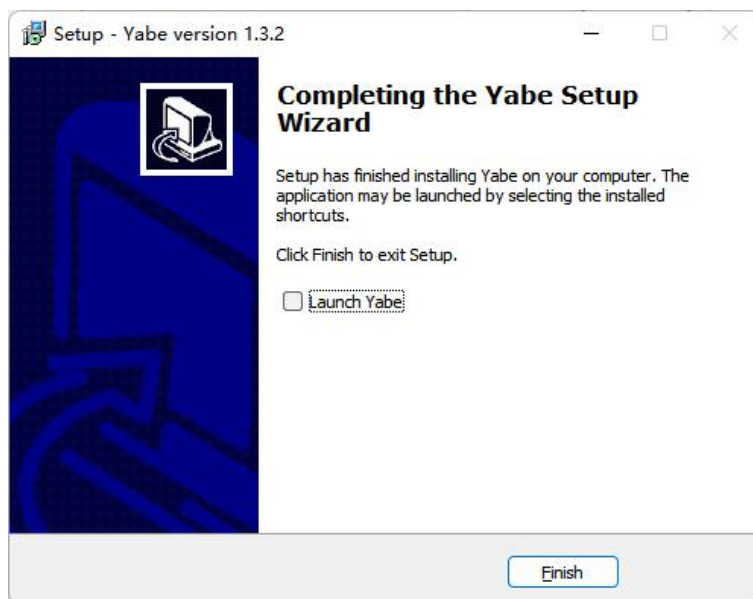
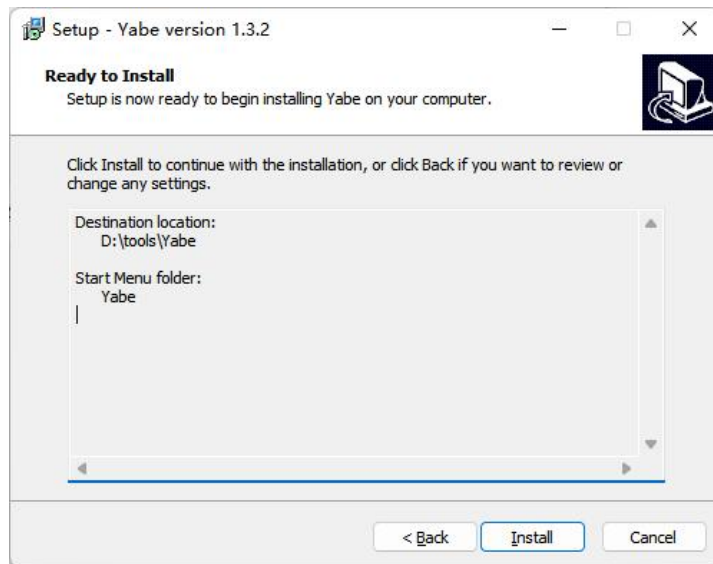
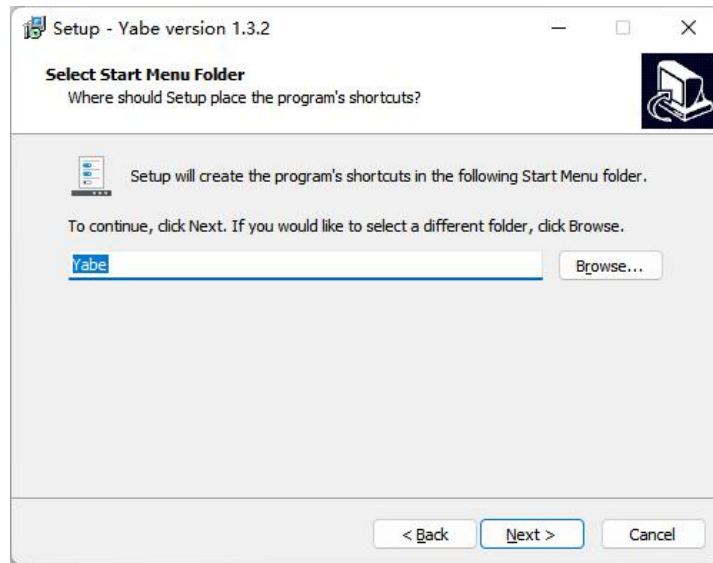


Step 1. Install Yabe

Yabe (Yet Another BACnet Explorer) is an easy to use tool software for BACNET. You can download it from [SourceForge](#).

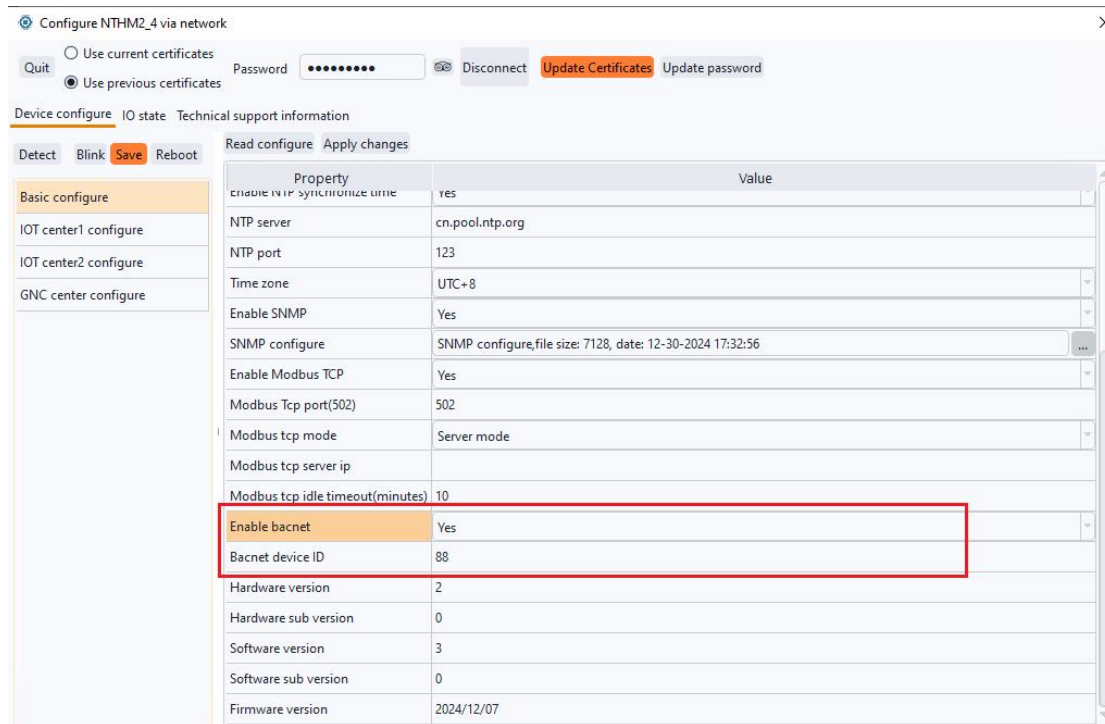
After download, run the 'Yabe' installation program and install the tools step by step.





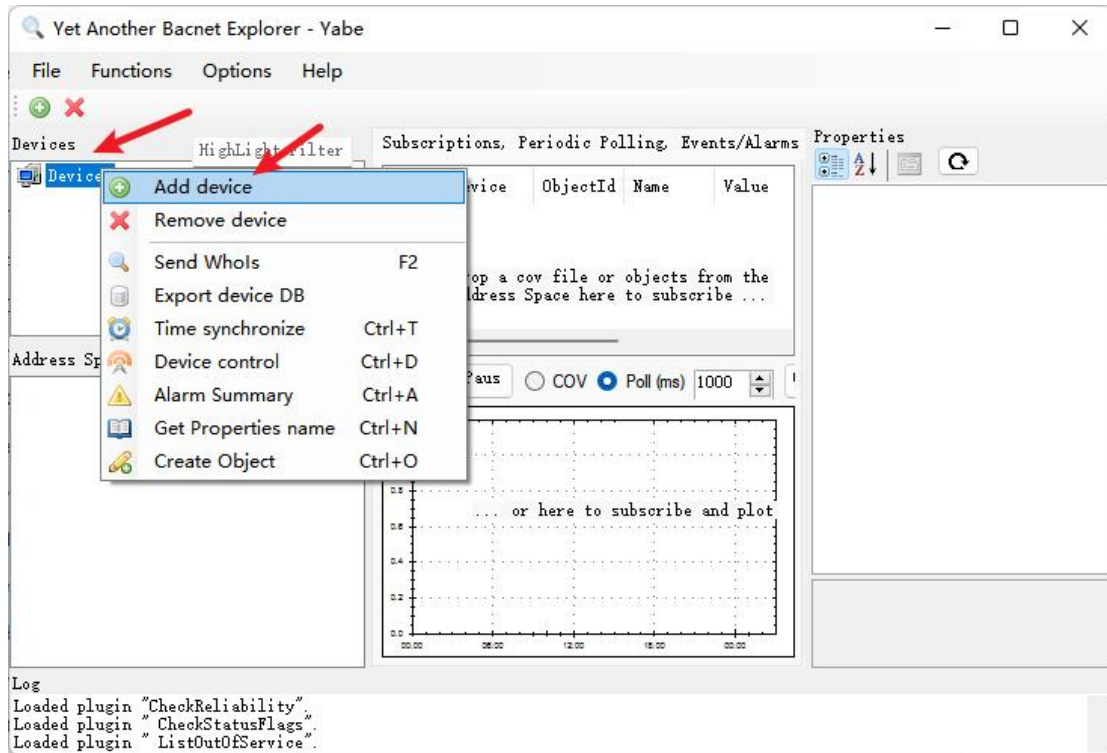
Step 2 BACNet configure in monigear device.

In the 'Basic configuration' section of the device, find the 'Enable bacnet' option, select 'yes', and customize a Bacnet device ID. Then click 'Apply changes' in sequence 'Save' and 'reboot' to make the Bacnet configuration of the device effective.

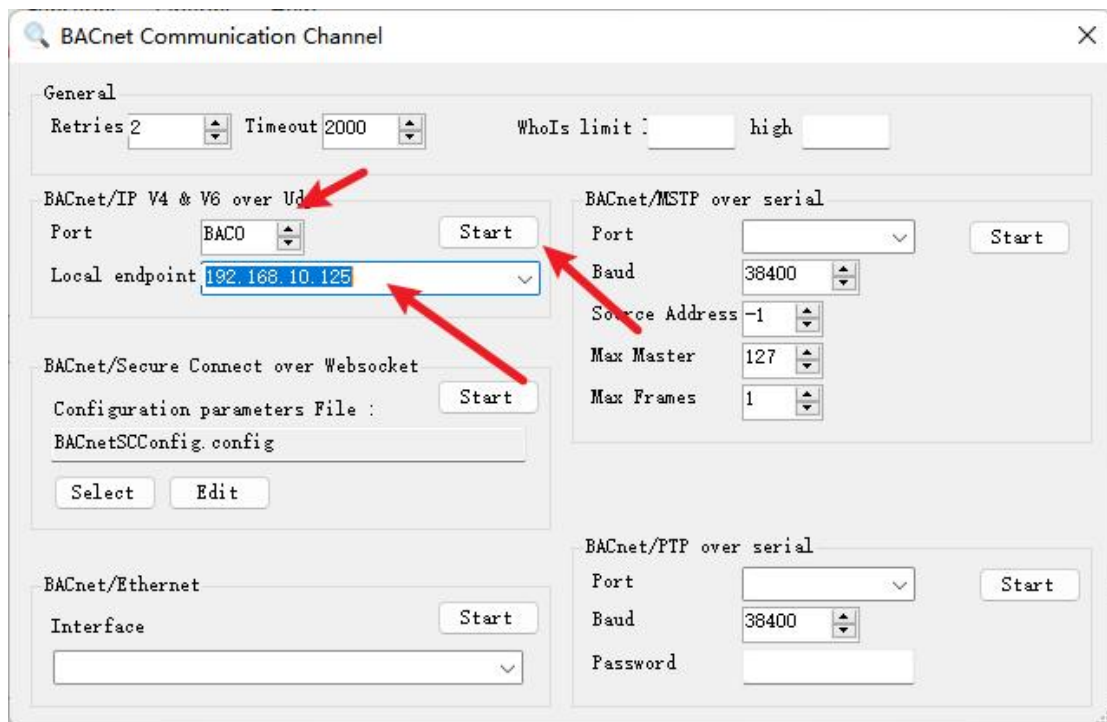


Step 3. View monigear device data in Yabe

Run 'Yabe', select the device, and click 'Add device'.



4. Use the default port number, select or enter the local IP address of the host, and click start.



5. If your host PC with Yabe and the monigear device in the same Ethernet network, a device with Bacnet enabled function appears in the local area network. Select one of the devices and choose a data point to see the current value and other information of that data point.

The screenshot shows the 'Yet Another Bacnet Explorer - Yabe' application window. It features a menu bar (File, Functions, Options, Help) and a toolbar with a refresh icon. The interface is divided into several sections:

- Devices:** A tree view showing a device 'GNC-NTHM2 NTHM2_4 [88]' selected.
- Subscriptions, Periodic Polling, Events/Alarms:** A table with columns 'Show', 'Device', 'ObjectId', 'Name', and 'Value'. It is currently empty.
- Address Space:** A tree view showing objects: 'ANALOG INPUT 0 (AI-0)' (highlighted in blue) and 'OBJECT_ANALOG_INPUT:1'.
- Properties:** A detailed view for 'BacnetProperty' with the following data:

Object Identi	OBJECT_ANALOG_INP
Object Name	ANALOG INPUT 0
Object Type	0 : Object Analog
Present Valu	29.434
Status Flags	0000
Event State	0 : Normal
Out Of Servi	False
Units	62 : Degrees Cels
Description	ANALOG INPUT 0
Reliability	0 : No Fault Dete
Cov Incremen	1
Proprietary	90.51
Proprietary	90
Proprietary	-200
- Object Identifier:** BACNET_APPLICATION_TAG_OBJECT_I D
- Log:** Shows messages like 'Sending ReadPropertyMultipleRequest ...' and 'ComplexAck'.

Red arrows point from the selected device in the 'Devices' tree to the 'Subscriptions' table, from the selected object in the 'Address Space' tree to the 'Properties' panel, and from the 'ANALOG INPUT 0 (AI-0)' object to the 'Subscriptions' table.